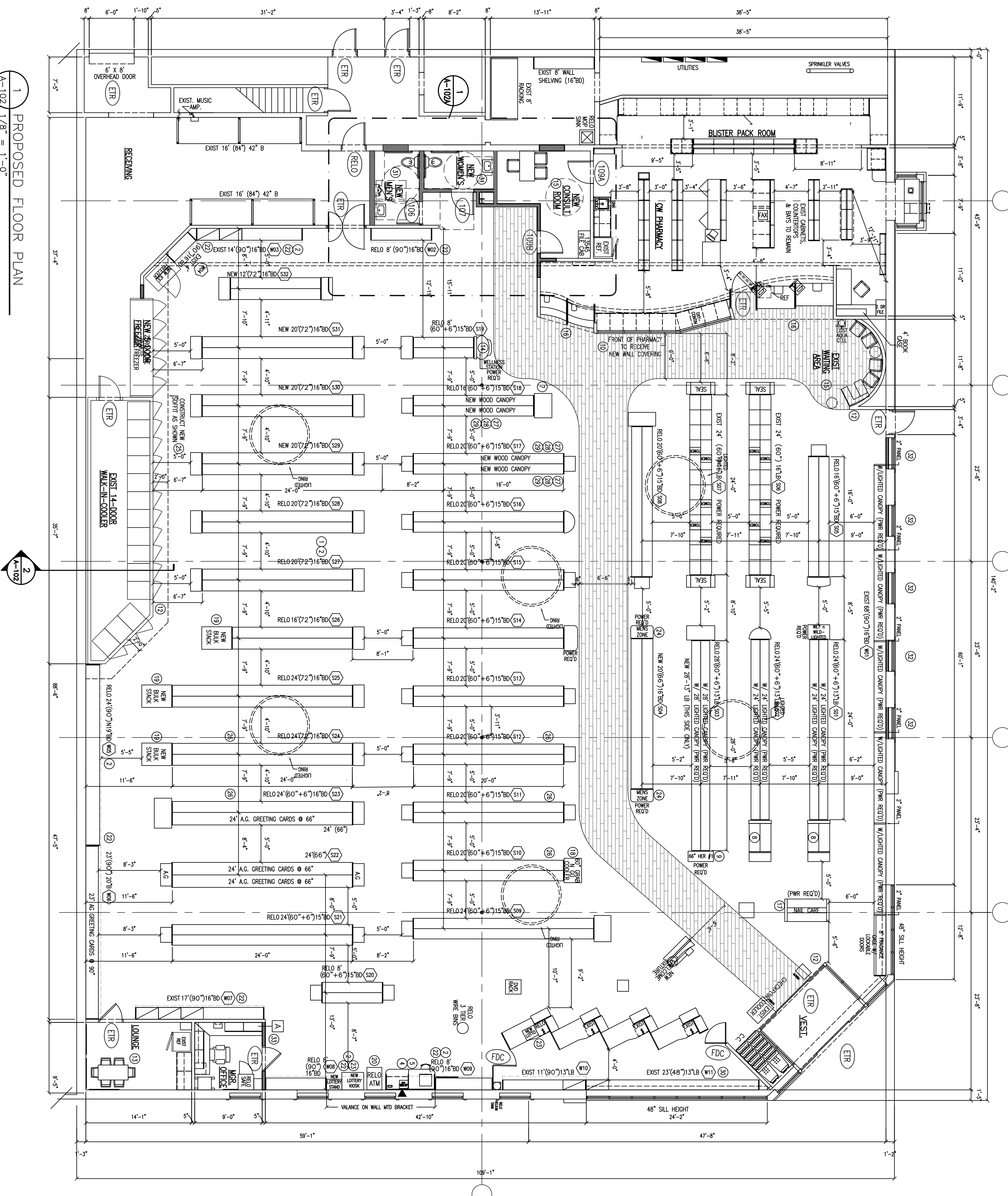


2 COOLER FASCIA DETAIL
A-102 3/4" = 1'-0"



1 PROPOSED FLOOR PLAN
A-102 1/8" = 1'-0"

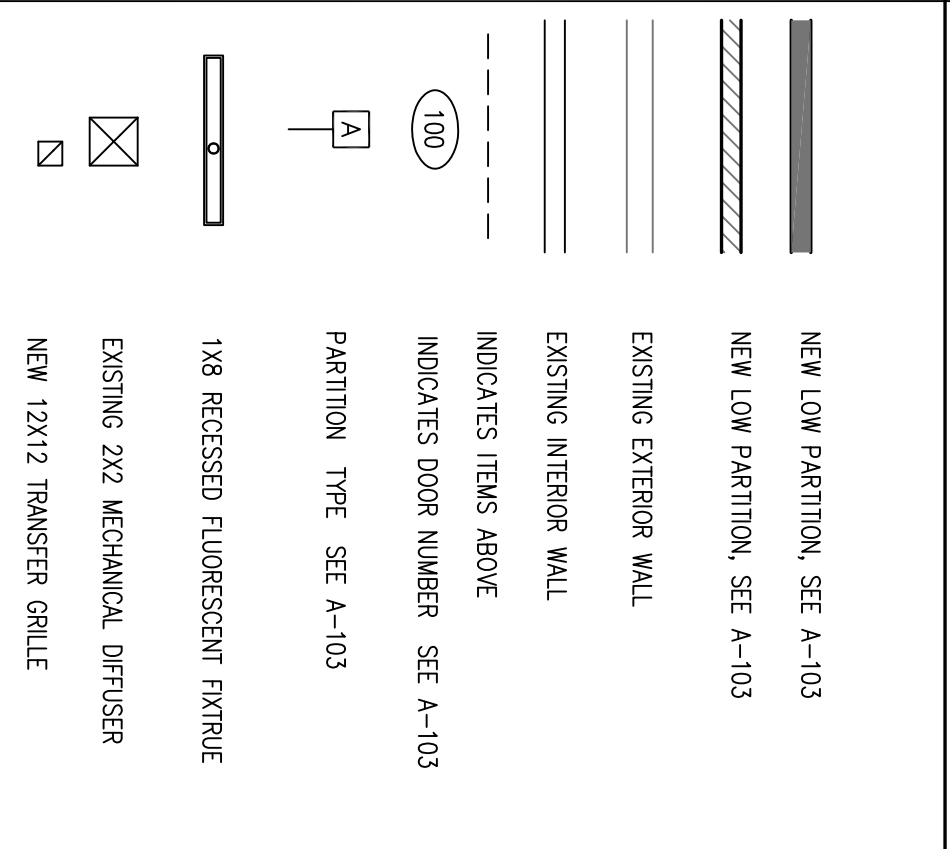
SHEET NOTES

- 1) INSTALL NEW STEEL AS SHOWN ON PLAN.
- 2) REMOVE EXISTING CHECKPOINT AND PHOTO CABINETS.
- 3) INSTALL NEW 3" RICH CHECKPOINT & PHOTO KIT AS SHOWN ON PLAN.
- 4) RELOCATE WESTERN UNION AS SHOWN ON PLAN.
- 5) INSTALL NEW WELCOME FRIDGE AS SHOWN ON PLAN.
- 6) INSTALL NEW WELCOME FRIDGE AS SHOWN ON PLAN.
- 7) REMOVE EXISTING FRONT OF PHARMACY W/NEW WALL COVERING AS NOTED ON PLAN.
- 8) REFINISH FRONT OF PHARMACY W/NEW WALL COVERING AS NOTED ON PLAN.
- 9) REFINISH FRONT OF PHARMACY W/NEW WALL COVERING AS NOTED ON PLAN.
- 10) REFINISH FRONT OF PHARMACY W/NEW WALL COVERING AS NOTED ON PLAN.
- 11) REFINISH FRONT OF PHARMACY W/NEW WALL COVERING AS NOTED ON PLAN.
- 12) REFINISH FRONT OF PHARMACY W/NEW WALL COVERING AS NOTED ON PLAN.
- 13) REFINISH FRONT OF PHARMACY W/NEW WALL COVERING AS NOTED ON PLAN.
- 14) REFINISH FRONT OF PHARMACY W/NEW WALL COVERING AS NOTED ON PLAN.
- 15) REFINISH FRONT OF PHARMACY W/NEW WALL COVERING AS NOTED ON PLAN.
- 16) REFINISH FRONT OF PHARMACY W/NEW WALL COVERING AS NOTED ON PLAN.
- 17) REFINISH FRONT OF PHARMACY W/NEW WALL COVERING AS NOTED ON PLAN.
- 18) REFINISH FRONT OF PHARMACY W/NEW WALL COVERING AS NOTED ON PLAN.
- 19) REFINISH FRONT OF PHARMACY W/NEW WALL COVERING AS NOTED ON PLAN.
- 20) REFINISH FRONT OF PHARMACY W/NEW WALL COVERING AS NOTED ON PLAN.
- 21) REFINISH FRONT OF PHARMACY W/NEW WALL COVERING AS NOTED ON PLAN.
- 22) REFINISH FRONT OF PHARMACY W/NEW WALL COVERING AS NOTED ON PLAN.
- 23) REFINISH FRONT OF PHARMACY W/NEW WALL COVERING AS NOTED ON PLAN.
- 24) REFINISH FRONT OF PHARMACY W/NEW WALL COVERING AS NOTED ON PLAN.
- 25) REFINISH FRONT OF PHARMACY W/NEW WALL COVERING AS NOTED ON PLAN.
- 26) REFINISH FRONT OF PHARMACY W/NEW WALL COVERING AS NOTED ON PLAN.
- 27) REFINISH FRONT OF PHARMACY W/NEW WALL COVERING AS NOTED ON PLAN.
- 28) REFINISH FRONT OF PHARMACY W/NEW WALL COVERING AS NOTED ON PLAN.
- 29) REFINISH FRONT OF PHARMACY W/NEW WALL COVERING AS NOTED ON PLAN.
- 30) REFINISH FRONT OF PHARMACY W/NEW WALL COVERING AS NOTED ON PLAN.
- 31) REFINISH FRONT OF PHARMACY W/NEW WALL COVERING AS NOTED ON PLAN.
- 32) REFINISH FRONT OF PHARMACY W/NEW WALL COVERING AS NOTED ON PLAN.
- 33) REFINISH FRONT OF PHARMACY W/NEW WALL COVERING AS NOTED ON PLAN.
- 34) REFINISH FRONT OF PHARMACY W/NEW WALL COVERING AS NOTED ON PLAN.
- 35) REFINISH FRONT OF PHARMACY W/NEW WALL COVERING AS NOTED ON PLAN.

GENERAL NOTES

- A. PLAN DIMENSIONS ON THIS SHEET AND LARGE SCALE DRAWINGS ARE TO FACE OF DIM UNLESS OTHERWISE NOTED.
- B. SEE SHEET A-103 FOR DOOR TYPES.
- C. SEE SHEET A-103 FOR PARTITION TYPES.
- D. SEE SHEET A-104 FOR FINISH SCHEDULE.
- E. SEE SHEET A-104 FOR MECHANICAL AND ELECTRICAL WORK.

LEGEND



PROPOSED FLOOR PLANS

RITE AID PHARMACY #347
250 ENGLAR ROAD, SUITE 22
WESTMINSTER, MARYLAND



3909 National Drive • Suite 110 • Burtonville, Maryland 20866
t 301.476.9364 f 301.476.9760 w www.farrell-mcglynn.com

PROFESSIONAL CERTIFICATION.
I CERTIFY THAT THESE DOCUMENTS WERE PREPARED OR APPROVED BY ME, AND THAT I AM A DULY LICENSED ARCHITECT UNDER THE LAWS OF THE STATE OF MARYLAND, LICENSE NUMBER 10907, EXPIRATION DATE NOVEMBER 01, 2014.

DENNIS W. MCGLYNN, AIA

D-DATE: 08.20.14
SCALE: AS SHOWN
DRAWN: DWM
CHECKED: DWM
PROJECT: 140703
SHEET: 4 OF 8
FILE: A-102

A-102