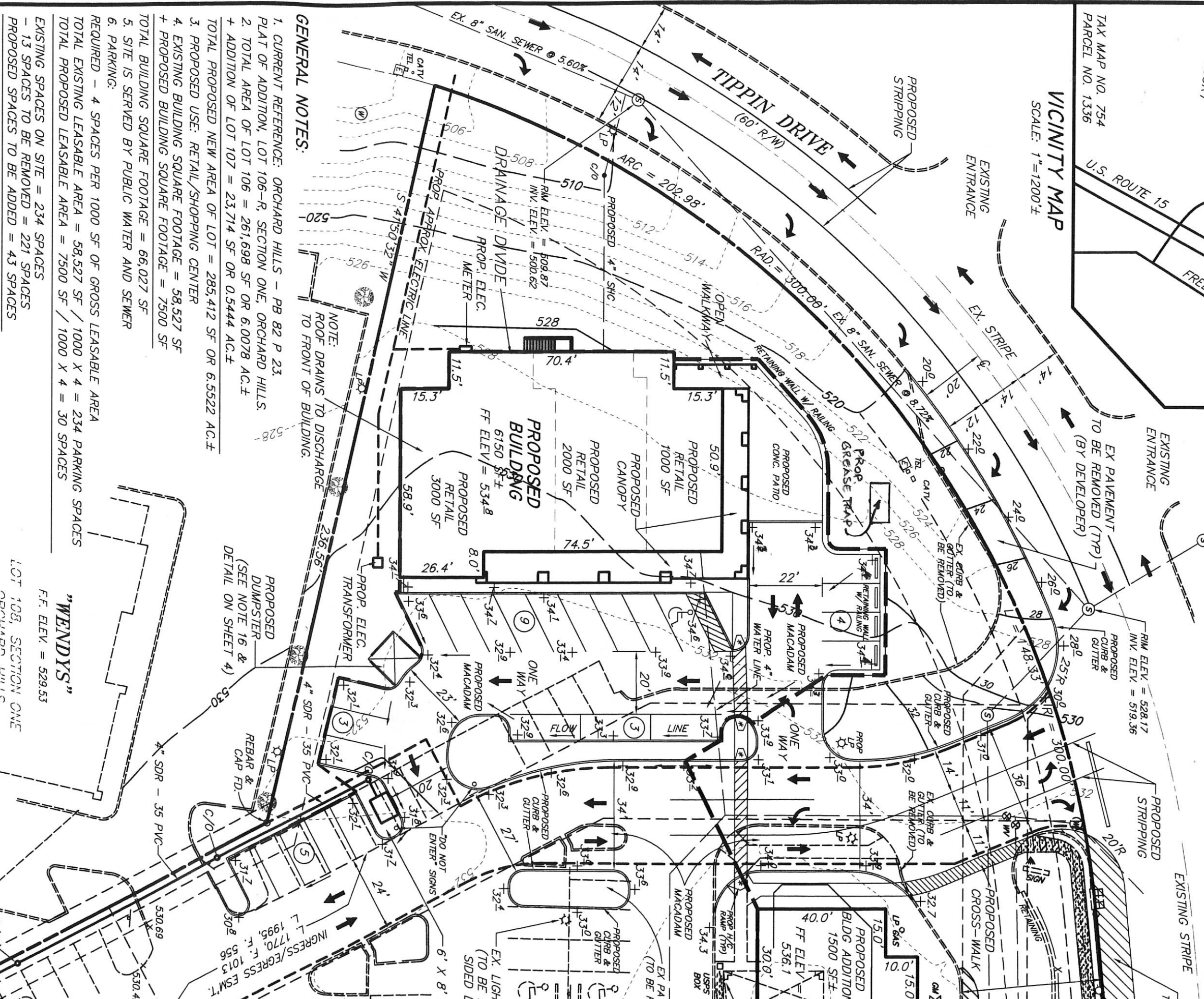
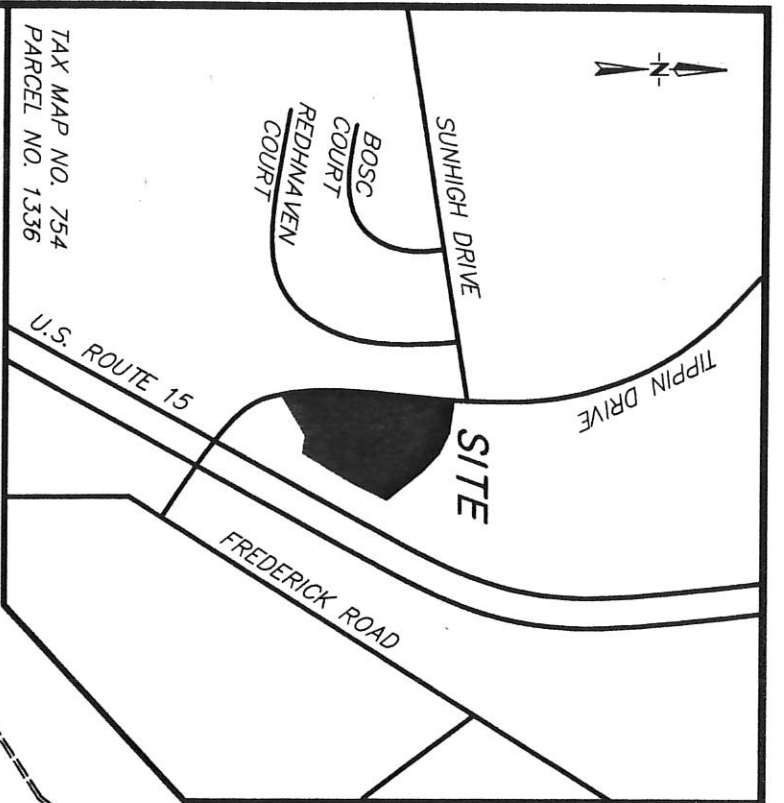


### LANDSCAPE CHART

SYMBOL	COMMON NAME	BOTANICAL NAME	HEIGHT	TYPE	QUANTITY
	RED MAPLE	ACER RUBRUM (KARPICK)	6' - 8'	B & B	18
	GRAPE MYRTLE	LAGERSTROEMIA INDICA	5' - 6'	B & B	13
	WHITE PINE	PINUS STROBUS	5' - 6'	B & B	12
	EASTERN RED CEDAR	JUNIPERUS VIRGINIANA	4' - 6'	B & B	6
	INKBERRY HOLLY	ILEX GLABRA "SHAMROCK"	18" - 24"	B & B	37



**GENERAL NOTES:**

- CURRENT REFERENCE: ORCHARD HILLS - PB 82 P 23. PLAT OF ADDITION, LOT 106-R, SECTION ONE, ORCHARD HILLS.
- TOTAL AREA OF LOT 106 = 261,698 SF OR 6.0078 AC.± + ADDITION OF LOT 107 = 23,714 SF OR 0.5444 AC.±
- TOTAL PROPOSED NEW AREA OF LOT = 285,412 SF OR 6.5522 AC.±
- PROPOSED USE: RETAIL/SHOPPING CENTER
- EXISTING BUILDING SQUARE FOOTAGE = 58,527 SF + PROPOSED BUILDING SQUARE FOOTAGE = 7500 SF
- TOTAL BUILDING SQUARE FOOTAGE = 66,027 SF
- SITE IS SERVED BY PUBLIC WATER AND SEWER
- PARKING:  
REQUIRED - 4 SPACES PER 1000 SF OF GROSS LEASABLE AREA  
TOTAL EXISTING LEASABLE AREA = 58,527 SF / 1000 X 4 = 234 PARKING SPACES  
TOTAL PROPOSED LEASABLE AREA = 7500 SF / 1000 X 4 = 30 SPACES
- EXISTING SPACES ON SITE = 234 SPACES  
- 13 SPACES TO BE REMOVED = 221 SPACES  
PROPOSED SPACES TO BE ADDED = 43 SPACES
- TOTAL SPACES TO BE PROVIDED = 264 SPACES
- TOTAL REQUIRED SPACES: (66,027 SF BUILDING AREA) = 264 PARKING SPACES  
TOTAL PROVIDED SPACES: 264 SPACES, INCLUDING 9 HANDICAP SPACES
- ALL EXISTING UTILITIES SHALL BE VERIFIED BY THE CONTRACTOR PRIOR TO CONSTRUCTION. FOR UNDERGROUND UTILITY LOCATIONS, CALL "MISS UTILITY" 24 HOURS PRIOR TO CONSTRUCTION
- ALL CONSTRUCTION IS TO BE DONE IN ACCORDANCE WITH THE TOWN OF THURMONT "CONSTRUCTION SPECIFICATIONS"
- ALL STRIPED AREAS ARE TO BE PAINTED STRIPES ON ASPHALT
- SITE PLAN APPROVED BY THE TOWN OF THURMONT PLANNING COMMISSION

10' EASEMENT FOR DRAINAGE UTILITIES & CABLE T.V. P.B. 52, P. 181 P.B. 38, P. 94